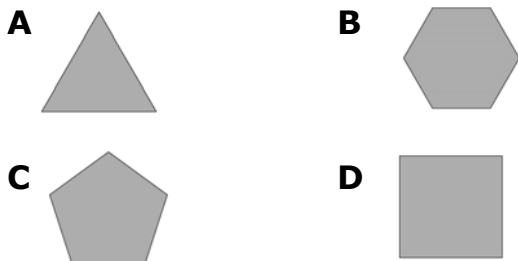


Chapter 1 Test

For #1 to #4, circle the best answer.

1. Which figure has the largest number of lines of symmetry?

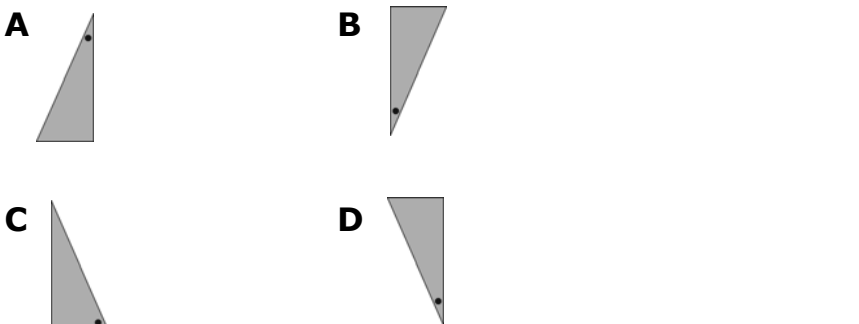


2. Both line symmetry and rotation symmetry are shown in which figures?



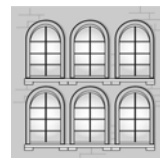
- A** I and III **B** II and III
C I and IV **D** III and IV

3. The figure to the right was rotated about a vertex. Which image shows the resulting image?



4. Which of the following statements is true when describing the picture to the right?

- A** There is a horizontal line of symmetry.
B There is an oblique line of symmetry.
C The line of symmetry is vertical.
D A line of symmetry does not exist.



Name: _____

Date: _____

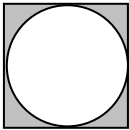
Complete the statements in #5 and #6.

5. The order of rotation of the snowflake shown in the diagram is

_____.



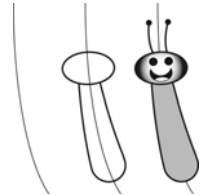
6. In the diagram below, the angle of rotation is _____.



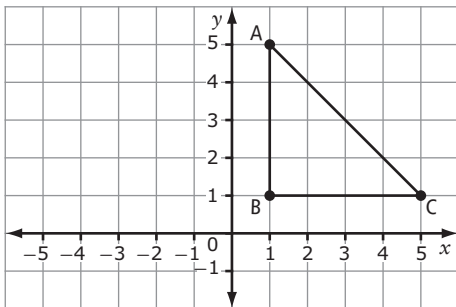
Short Answer

7. Omari says that the cartoon figure he drew is symmetrical with respect to a vertical line. Do you agree with Omari?

Circle YES or NO. Give 1 reason for your answer.



8. A triangle is drawn on a coordinate grid.



a) Draw the image of the triangle after it is translated 6 units to the left.

b) Label the coordinates of the translated points.

A' _____

B' _____

C' _____

c) Circle the type of symmetry which results from the translation of the graph. VERTICAL or HORIZONTAL or NEITHER.

