

Section 4.2 Extra Practice

1. Circle whether you would multiply or divide to find each missing value.

a) $\frac{1}{2} = \frac{x}{200}$

MULTIPLY or DIVIDE.

b) $\frac{1}{3.5} = \frac{14}{y}$

MULTIPLY or DIVIDE.

c) $\frac{1}{z} = \frac{6}{24}$

MULTIPLY or DIVIDE.

d) $\frac{1}{0.25} = \frac{w}{6.25}$

MULTIPLY or DIVIDE.

2. Find the missing value.

a) $\frac{1}{8} = \frac{\boxed{}}{160}$

× _____

b) $\frac{1}{50} = \frac{25}{\boxed{}}$

÷ _____

c) $\frac{1}{0.6} = \frac{12}{\boxed{}}$

× _____

d) $\frac{1}{\boxed{}} = \frac{15}{120}$

÷ _____

e) $\frac{1}{25} = \frac{\boxed{}}{125}$

f) $\frac{1}{\boxed{}} = \frac{5}{20}$



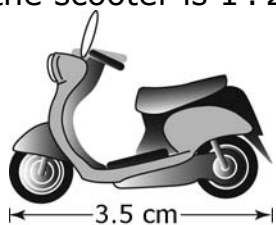
Name: _____

Date: _____

BLM 4-3
(continued)

3. Calculate the actual length of each object.

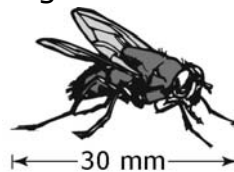
a) The scale for the reduction of the scooter is 1 : 20.



$$\frac{1}{20} = \frac{3.5}{\boxed{}}$$

diagram : actual

b) The scale for the enlarged image of a housefly is 1 : 0.3.



$$\frac{\boxed{}}{\boxed{}} = \frac{\boxed{}}{\boxed{}}$$



Divide to find the scale factor.

4. Determine the scale factor.

a) $\frac{53}{106} = \underline{\hspace{2cm}}$

b) $\frac{0.9}{15} = \underline{\hspace{2cm}}$

c) $\frac{17}{850} = \underline{\hspace{2cm}}$

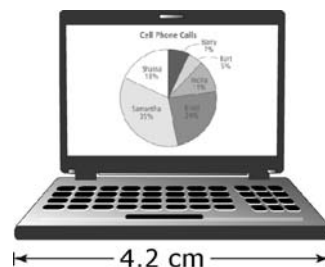
d) $\frac{6.2}{24.8} = \underline{\hspace{2cm}}$

e) $\frac{18}{24} = \underline{\hspace{2cm}}$

f) $\frac{30}{37.5} = \underline{\hspace{2cm}}$

5. An actual laptop has a width of 39.5 cm. Calculate the scale factor used in the image of the laptop. Round your answer to the nearest tenth.

$$\frac{\boxed{}}{\boxed{}} = \underline{\hspace{2cm}}$$



Name: _____

Date: _____

BLM 4-3
(continued)

6. A driving distance is 650 km. The distance shown on a map is 4 cm.

a) What is the scale factor?

Hint: 1 km = 100 000 cm

b) Express the map scale in words.

