


Fathom™

Fathom™ is a dynamic statistical software package. It will allow you to enter, modify, graph, and analyse data. The following overview will provide you with what you need to use *Fathom™*. The instructions work for *Fathom™* 1 and *Fathom™* 2. Screens shown here were created using *Fathom™* 1.

Start Fathom™

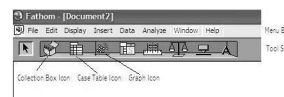
To access *Fathom™*, double-click the *Fathom™* icon . This is located either on your desktop or on the **Start** menu.

The Menu Bar

The menu bar contains all the standard *Fathom™* functions.

File Menu

Use this menu to open and save a *Fathom™* document.



The Tool Shelf

Edit Menu

Use this menu to copy or cut selected items, and to paste previously copied items. You can also use this menu to undo operations you have performed in *Fathom™*.

The toolbar contains icons of the key objects. You can place new objects in the workspace by clicking on the desired icon, and dragging.

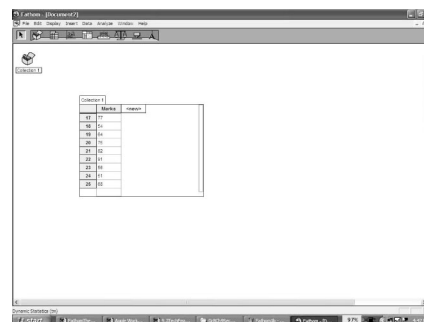
Case Table

To create and enter data into a case table:

- drag the **Case Table** icon from the **Tool Shelf** into the workspace
- click <new>. Type the attribute name you would like for the data, and press enter. The example used Marks.
- click in the box below the name, enter your data, and press enter
- continue until you have entered all the data items.

Collection Box

As you enter data into the case table, a small treasure chest will appear automatically and fill with gold balls. This is called a **Collection Box**. Each gold ball represents one row of data in the collection box.

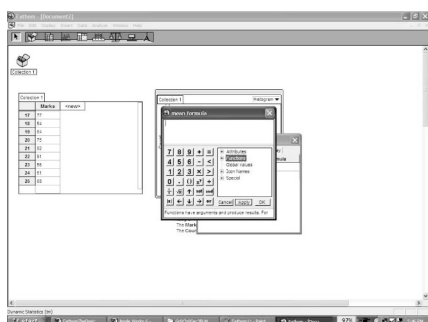


Fathom™

To Find the Mean and Median

Mean

- Right-click either the graph or the case table, and click **Inspect Collection** on the pop-up menu.
- On the **Measure** tab, click <new>, and type Mean.
- Right-click under the formula heading, and click **Edit Formula** on the pop-up menu.
- A box resembling a calculator will appear. Click the **+** next to **Function**, then the **+** next to **Statistical**, and finally the **+** next to **One Attribute**.



- Scroll down the list of functions, and double-click **Mean**. The word mean, followed by a pair of brackets, will appear in the display.
- Type the name of the attribute inside the brackets. Click OK.

Median

- Click <new> under Mean, and type Median.
- Follow the above steps, beginning with “Right-click under the Formula heading... .” This time, enter **median**.

