

10-1: Exploring Globalization

CHAPTER 8: LIVING WITH THE LEGACIES OF HISTORICAL GLOBALIZATION

1. Responsibility for historical globalization in Rwanda is shared by
 - A. Belgium and Germany
 - B. Germany and Britain
 - C. Belgium and France
 - D. Britain and France
 2. Most Indigenous people are not represented in the United Nations because
 - A. of their small population base globally
 - B. of their lack of organization internationally
 - C. the UN represents countries, not other kinds of groups
 - D. the UN has refused to hear their grievances
 3. The separation of the population as practiced in South Africa is known as
 - A. genocide
 - B. apartheid
 - C. enemy aliens
 - D. segregation
 4. The leader of the African National Congress who led the fight against apartheid was
 - A. Thabo Mbeki
 - B. F. W. de Klerk
 - C. Desmond Tutu
 - D. Nelson Mandela
 5. The Canadians labelled as enemy aliens and sent to internment camps during World War I were of what background?
 - A. German and Japanese
 - B. Austrian and Japanese
 - C. German and Ukrainian
 - D. Japanese and Ukrainian
 6. Organizations, such as churches, schools and hospitals, that help respond to the legacies of historical globalization are known as
 - A. Aid without Borders
 - B. crown corporations
 - C. royal commissions
 - D. non-government organizations
- Use the following information to answer question 7.*

The Belgians continued to give Tutsis key positions and fostered even greater divisions by requiring members of the two groups to carry cards identifying them as Hutus or Tutsis.

7. The quotation gives an example of the results of

- A. historical globalization
- B. religious genocide
- C. glocalization
- D. apartheid

Use the following quotation to answer questions 8 and 9.

“Rwanda will never ever leave me...Fifty to sixty thousand people walking in the rain and the mud to escape being killed, and seeing a person there beside the road dying. We saw lots of them dying. And lots of those eyes still haunt me, angry eyes or innocent eyes, no laughing eyes.”

8. The scene described in this quotation is the result of

- A. famine
- B. apartheid
- C. genocide
- D. religious intolerance

9. The observations made in the quotation can **most** likely be attributed to

- A. Boutros Boutros-Ghali
- B. Esther Mujawayo
- C. Roméo Dallaire
- D. Louise Arbour

Use the following quotation to answer question 10.

“...in 2006, women made up 70 per cent of the country’s population. Rwanda had the highest number of women parliamentarians—49 per cent—in the world.”

10. This situation described in the information above is due **primarily** to

- A. strong gender equality in Rwanda
- B. the spread of HIV/AIDS
- C. the number of men killed during the civil war
- D. the efforts of the organization Women for Women

Use the following sources to answer questions 11 to 14.

Source I

The groups lived in separate areas, went to separate schools, and worked at racially designated jobs.

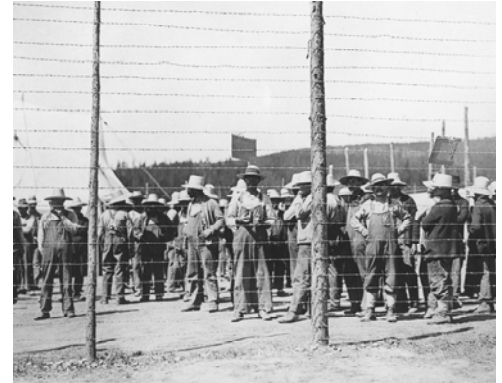
Source II

South African Inequality under Apartheid, 1984

Racial Designation	Income per Person (In rands, South African currency)	Literacy Rate (Percentage of adults)	State Spending per Student on Education (In rands)
White	14 880	93	2 538
Asian	4 560	71	1 857
Coloured	3 000	62	1 286
Black	1 246	32	504

Note: In 2007, 1 rand = 16¢ Canadian or \$1 Canadian = 6.25 rand.

Source III



Armed guards and high wire fences ensured that none of the Germans and Ukrainians interned at Castle Mountain Internment Camp in Alberta escaped.

Source IV

As a result, all Japanese Canadians were moved away from the Pacific coast to internment camps in the interior of British Columbia, or later, to the Prairies. They were allowed to take only what they could carry; everything else they owned was confiscated and later sold to pay for their internment.

Source V



Japanese Canadians were shipped to camps in the interior of British Columbia for the rest of World War II.

11. The common thread through all of these sources is the issue of

- A. apartheid
- B. genocide
- C. Eurocentrism
- D. discrimination

12. The term “enemy aliens” would apply to

- A. Sources I, III and IV
- B. Sources I, IV and V
- C. Sources II, III and V
- D. Sources III, IV and V

13. Which sources identify economic measures used to suppress a group?

- A. Sources I and II
- B. Sources II and IV
- C. Sources II and III
- D. Sources III and IV

14. Sources III, IV and V have their origin in

- A. racial conflict
- B. ethnic differences
- C. regional differences
- C. international conflict

Use the following source to answer question 15.

...has deprived us of our independence, our dignity, our self-respect and our responsibility.

— Katherine June Delisle, Kanien’kehaka First Nation

15. This quotation is a reference to the

- A. BNA Act
- B. Indian Act
- C. Constitutional Act
- D. Royal Commission on Aboriginal Peoples