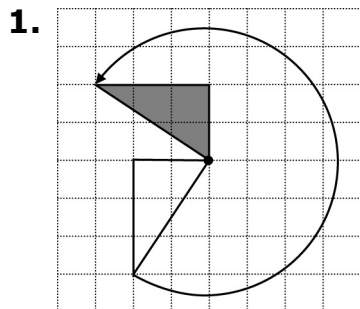


Section 1.3 Extra Practice

Draw a line to match each rotation in #1 to #3 with the correct description.

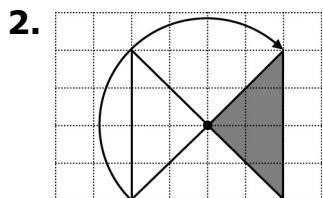


A 90° counterclockwise

B 270° clockwise

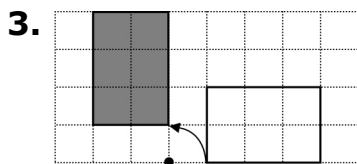
C 180° clockwise

D 90° clockwise



E 180° counterclockwise

F 270° counterclockwise

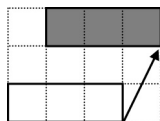


4. Describe the translations shown by the arrows.

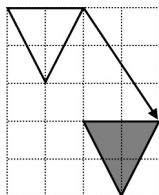
Example:

 1 unit right

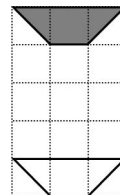
 2 units up



a) units _____
 units _____



b) units _____
 units _____



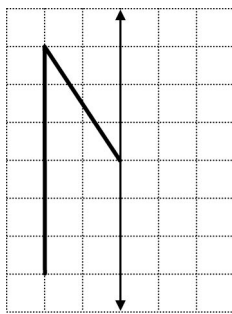
Name: _____ Date: _____

BLM 1-8
(continued)

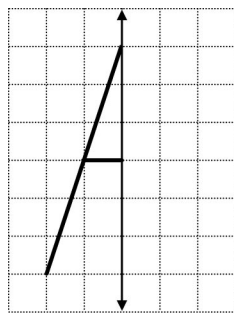
c) _____ units _____
 _____ unit _____

d) _____ units _____
 _____ units _____

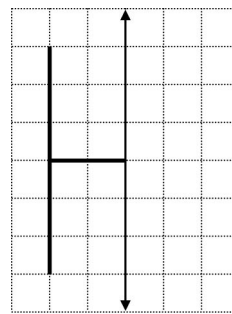
5. a) Draw the reflection image on each grid to complete the figure.



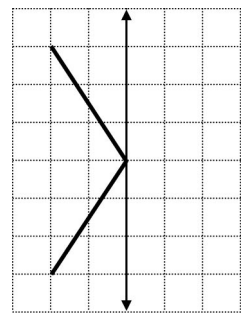
Grid A



Grid B



Grid C



Grid D

b) Identify each figure.

Grid A _____ Grid B _____

Grid C _____ Grid D _____

c) Each of the letters has a vertical line of reflection. For which of the letters can you draw a horizontal line of reflection so that the letter reflects onto itself? _____

Draw these horizontal lines of reflection on the grids above.