

Creating Circle Graphs in Corel® Quattro® Pro

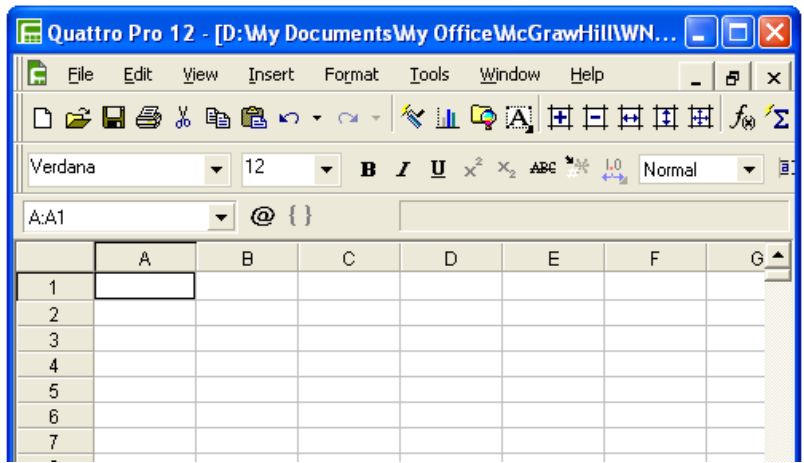
The results of James' milk survey are shown in the table.

Type of Milk	Number of Students
2%	15
Chocolate	24
Soy	8
Other	13

Create a circle graph of these data.

Open Corel® Quattro® Pro.

It looks like this.



Type "Type of Milk".

The title will appear in cell A1.

	A	B	C
1	Type of Milk		
2			
3			
4			
5			
6			
7			

Press the Enter key.

Type "2%".

The data will appear in cell A2.

	A	B	C
1	Type of Milk		
2	2%		
3			
4			
5			
6			
7			

Continue with all data in the Type of Milk list. When you have finished, column A will look like this.

	A	B	C
1	Type of Milk		
2	2%		
3	Chocolate		
4	Soy		
5	Other		
6			
7			

Name: _____

Date: _____

BLM 8-15
(continued)

Press the right-arrow key once. Press the up-arrow key five times.

The outline will be in cell B1. Type "Number of Students".

Press the Enter key.

Continue with "15", and the other data in the "Number of Students" list.

When you have finished, columns A and B will look like this.

Move the cursor between A and B until the double arrow shows.

Left-click the mouse, and drag to make column A wider. Adjust the width of column B in the same way.

	A	B	C	D
1	Type of Milk			
2	2%			
3	Chocolate			
4	Soy			
5	Other			
6				
7				

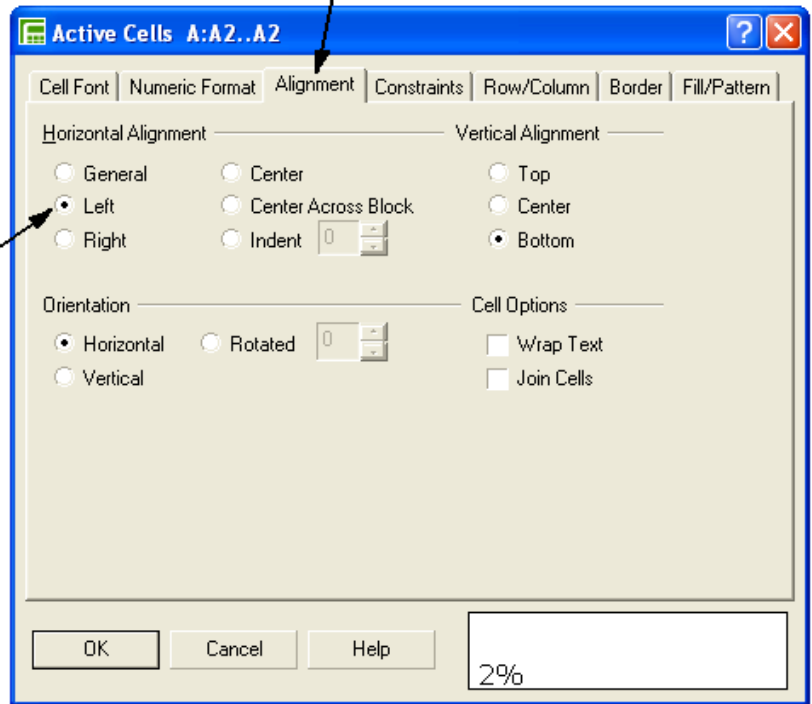
	A	B	C	D
1	Type of	Number of Students		
2	2%	15		
3	Chocola	24		
4	Soy	8		
5	Other	13		
6				
7				



	A	B	C
1	Type of Milk	Number of Students	
2	2%		15
3	Chocolate		24
4	Soy		8
5	Other		13
6			
7			

Select cell A2. Select the Format menu, then Selection Properties, then Alignment. Set the horizontal alignment to Left, and press OK. Now you can see all of the data.

Click here first
Click here second



Move the cursor to cell A1. Left-click and drag to B5.

	A	B	C
1	Type of Milk	Number of Students	
2	2%	15	
3	Chocolate	24	
4	Soy	8	
5	Other	13	
6			
7			

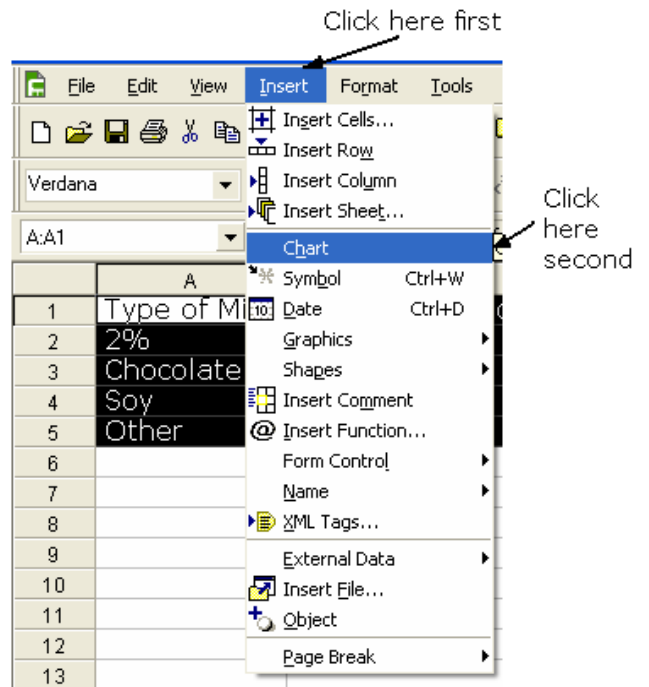
Name: _____

Date: _____

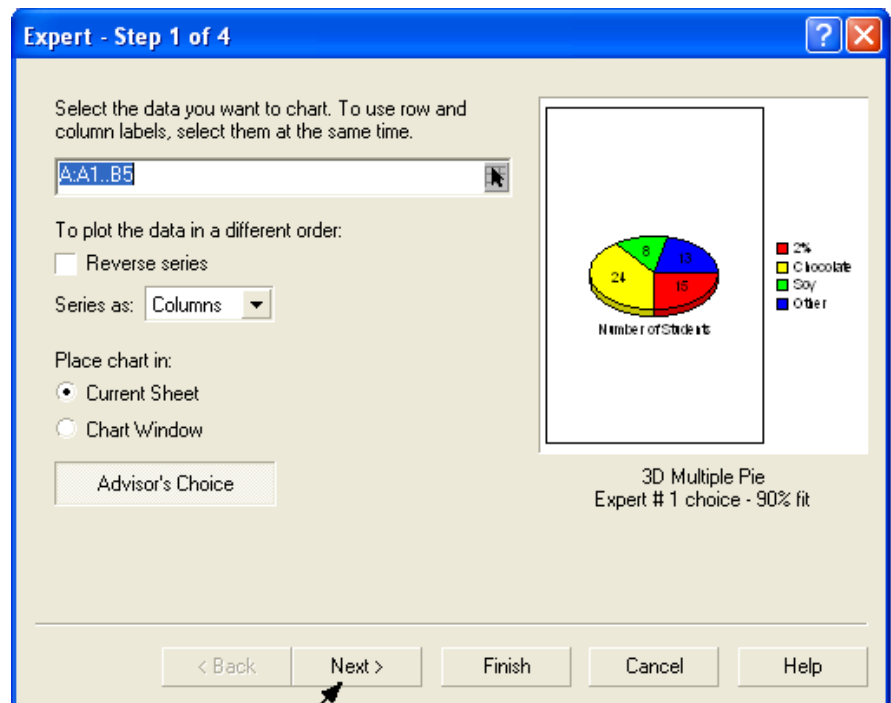
BLM 8-15
(continued)

Click on Insert.

Select Chart.



A new box will appear.
Click on Next.



Name: _____

Date: _____

BLM 8-15
(continued)

Another box will appear.

Click on Pie.

Click in the 3-D box to uncheck.

Click Next.

Click here

Click to uncheck

Click here last

Expert - Step 2 of 4

Category:

- Area
- Bar
- Bubble
- Gantt
- High Low
- Histogram
- Line
- Mixed
- Pie**
- Polar
- Radar

Type:

3-D

Advisor's Choice

Add Depth

Add Secondary Y-axis

Advanced Rendering

3D Multiple Pie
Expert # 1 choice - 90% fit

Number of Students

2%
Chocolate
Soy
Other

< Back **Next >** Finish Cancel Help

Another box will appear.

Click in the box marked Title.

Type "Milk Survey".

Press the Tab key twice.

Type "Type of Milk".

Press the Tab key.

Type "Number of Students".

Click on Finish.

Expert - Step 3 of 4

If you want a main title, a subtitle, a footnote, or an axis titles type them below:

Title
Milk Survey

Subtitle

X-Axis
Type of Milk

Y-Axis
Number of Students

Z-Axis

Footnote

Milk Survey

Number of Students

Label

2%
Chocolate
Soy
Other

< Back **Next >** Finish Cancel Help

Name: _____

Date: _____

Move the cursor to a clear space. Click the left mouse button.

The circle graph will appear.

Click on the chart to select it.

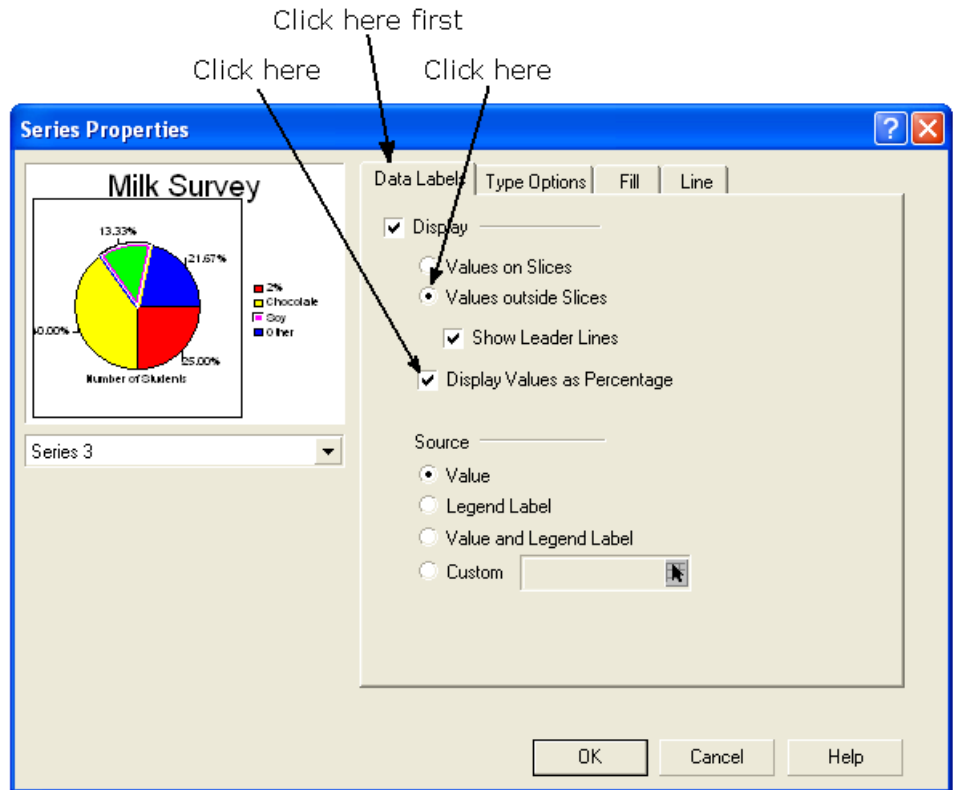
Double-click on one of the slices of the pie. A new box will appear.

Click on the Data Labels tab.

Select the radio button Values outside Slices.

Then, check the box Display Values as Percentage.

Click OK.



Click on the chart to select it.

Double-click on one of the percent values. A new box will appear.

Click on the Numeric Format tab.

Click the down arrow on the Decimal Places spin button twice. This will set the number of decimal places to 0.

Click on OK.

